

# THE LEXINGTON CLUB

ALL OF HAMILTON PLACE - P.U.D.  
A RESUBDIVISION OF PINECREST PARK, P.B.4 PAGE 11 AND A  
PORTION OF PALM BEACH FARMS COMPANY PLAT NO. 1 P.B. 2  
PAGES 26 THROUGH 28, PALM BEACH COUNTY RECORDS,  
LYING IN SECTION 21 TOWNSHIP 46 SOUTH, RANGE 42 EAST  
PALM BEACH COUNTY, FLORIDA  
IN 8 SHEETS SHEET NO. 5

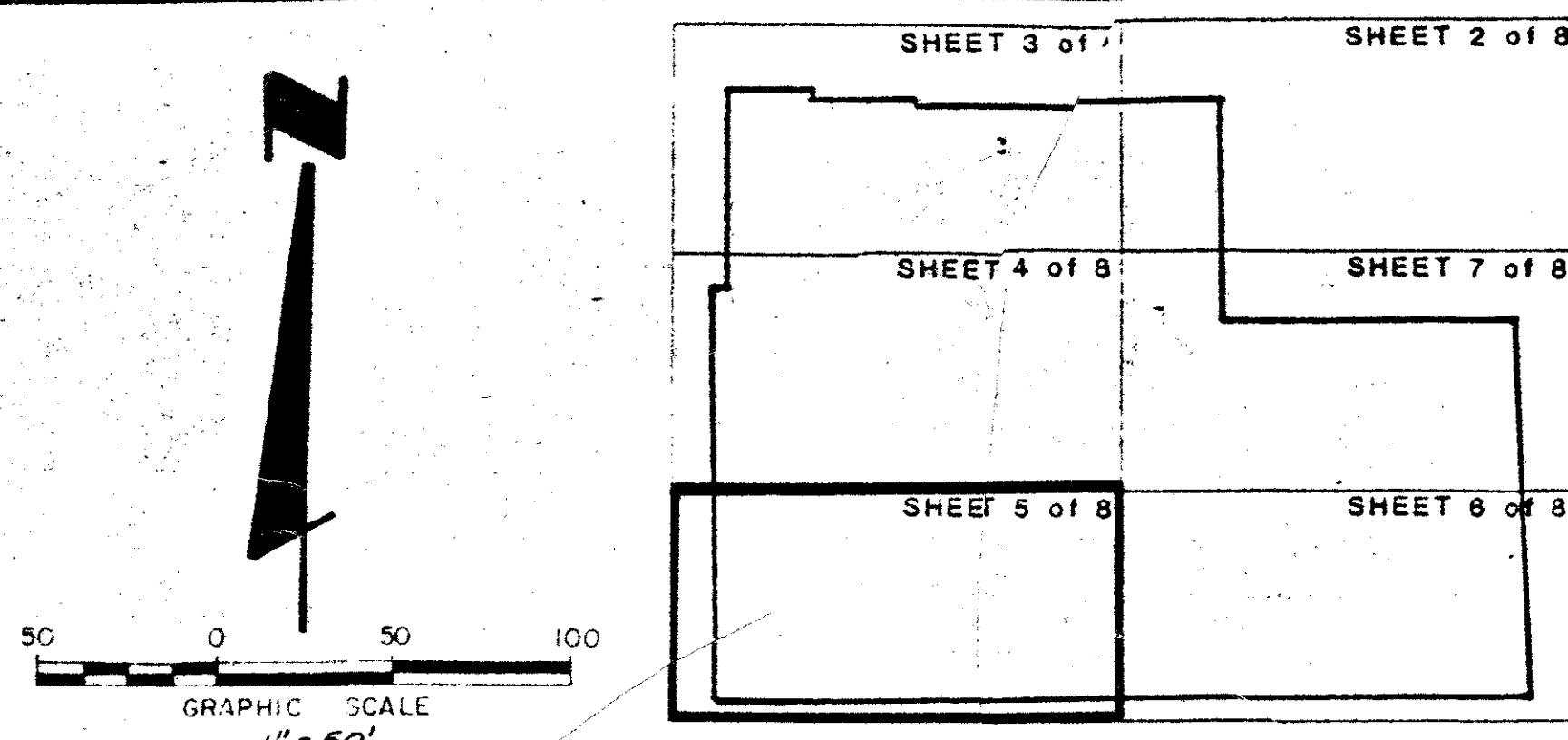
**Post, Buckley, Schuh & Jernigan, Inc.**  
CONSULTING ENGINEERS PLANNERS and SURVEYORS

STATE OF FLORIDA  
COUNTY OF PALM BEACH

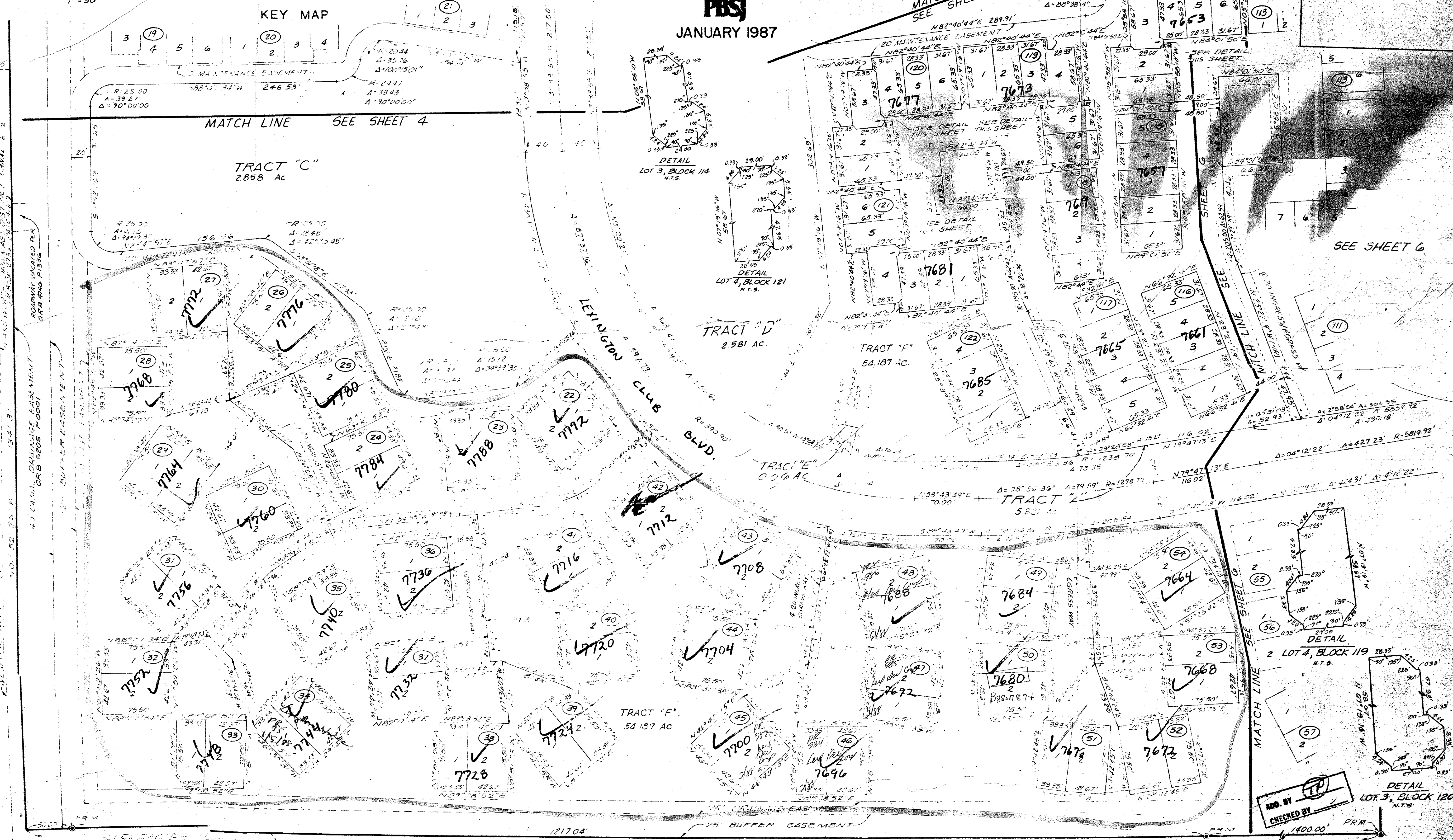
THIS PLAT WAS FILED  
FOR RECORD AT \_\_\_\_\_ M.  
THIS \_\_\_\_\_ DAY OF \_\_\_\_\_ 1987  
AND DULY RECORDED IN  
PLAT BOOK NO. \_\_\_\_\_ ON  
PAGE \_\_\_\_\_

JOHN B. DUNKLE  
CLERK CIRCUIT COURT

BY: \_\_\_\_\_ D.C.



**PBSJ**  
JANUARY 1987



SECTION 21  
P.B. 4  
P.B. 2  
P.B. 11  
P.B. 26  
P.B. 27  
P.B. 28

PLAT NO. 1  
P.B. 2  
PAGES 26  
THROUGH 28

SECTION 21  
TOWNSHIP 46  
SOUTH  
RANGE 42  
EAST

PALM BEACH  
COUNTY  
FLORIDA

ADD. BY \_\_\_\_\_  
CHECKED BY \_\_\_\_\_

DETAIL  
LOT 3, BLOCK 120  
N.T.S.

1400.00' PRM